

Community Players of Salisbury



SINGIN' IN THE RAIN

June 16 - 7:30 PM

June 17 - 7:30 PM

June 18 - 2:00 PM

WiHi Auditorium

Screenplay by Betty Comden
& Adolph Green

Songs by Arthur Freed
& Nacio Herb Brown

Directed by Rusty Mumford

260th
Production

86th
Year

Community Players of Salisbury, Inc.
presents



Screenplay by
Betty Comden and Adolph Green

Screenplay by
Nacio Herb Brown and Arthur Freed

Directed by
Rusty Mumford

Wicomico High School Auditorium

Friday, June 16, 2023 - 7:30 PM
Saturday, June 17, 2023 - 7:30 PM
Sunday, June 18, 2023 - 2:00 PM

Presented through special arrangement with
Music Theater International (MTI)
423 West 55th Street, New York, NY 10019

This production was made possible, in part, by a grant
from the Salisbury/Wicomico Arts Council,
and the Maryland State Arts Council.

Community Players' President's Message

Welcome to the final show of our very successful 86th season. *Singin' in the Rain* is my favorite movie musical, so I am very pleased to be on stage, even briefly. Somehow, I got typecast as an oversized, overaged guy.

We are very excited about our next season, which is announced elsewhere in the program. Meanwhile, we are doing a few extra things, mainly as fundraisers for our building fund. On June 24, we will be doing old time radio theater at our Nutters Cross building. The show will be directed by Matt Bogdan, who is also our fundraising committee chair. If you haven't been to the building before, we will be happy to show you around, either before or after the show. You will see why we are so enthused about turning it into a performance place of our own. Matt has an even bigger event planned for July 29, "Jammin' in July," when he will present a day long concert at Kylan Barn featuring various musical acts. Please look for information about these events in the lobby. If you are interested in being a sponsor or advertiser for the Kylan Barn event, please let me know.

As far as the actual building project goes, we are almost ready to start work on the parking lot and grounds of our Nutters facility. We are hoping to obtain grant support for funds to engage a theater building consultant.

Thanks to our patrons, advertisers, and most of all, you, our audience, for your continued support. Please sit back and enjoy the show.

Kel Nagel

Community Players Officers

President.....	Kel Nagel
Vice-President.....	Tom Robinson
Corresponding Secretary.....	Rusty Mumford
Recording Secretary.....	Darrell Mullins
Treasurer.....	Charlie Linton
Immediate Past President	Melissa Dasher

Board of Directors

David Allen, Ken Johnson, Shelbie Thompson - Term Expires 2023
Kate Adkins, Bobbie Calloway, Robin Finley - Term Expires 2024
Sharon Benchoff, Cass Dasher, Kyle Hayes - Term Expires 2025

Director's Message

Singin' in the Rain! First a song sung by Doris Eaton Travis in 1929... next a smash musical motion picture for MGM Studios in 1952... then a Broadway musical in 1985...finally a dream come true for this director in 2023! I'm sure that Arthur Freed (lyricist) and Nacio Herb Brown (composer) had little idea that their song would spawn such worldwide popularity and continued following almost 100 years later.

For me, *Singin' in the Rain* has been in mind for many years, but I always put it on the back burner because of the technical requirements (it has to rain), the need for tap dancers, and a perceived lack of popular appeal. I have always enjoyed those Broadway classics, so, with the change in our technical prowess and the interest of several tap dancers, I decided to suggest the show once again.

Singin' in the Rain gives the audience a light-hearted glimpse into the glitz and glamor of the 1920s at the end of the silent picture era, just as sound was being added to movies. There is also the classic love story, Hollywood gossip, and lots of dancing. This show offers the best that Broadway musicals can offer.

The cast of this production is overwhelmingly young (or young at heart) and incredibly talented. Some of these actors did not tap dance until we began rehearsals. Several are making their Players' debut. They are all very energetic and ready to show you the best of their talents.

The production staff of *Singin' in the Rain* is top notch and has been working tirelessly to make the show look and sound as amazing as the actors on the stage. From the producer to the musical director to the choreographer to the technical crews and the stage managers and their crews, all are doing their best to bring this show to life for our audiences.

You, the audience, have the best role of all! You need only to enjoy this production of *Singin' in the Rain* that we, the cast and crew, have enjoyed presenting for you.

Rusty Mumford

The Cast

Don Lockwood	Luke Schoellkopf
Cosmo Brown	Kyle Hayes
Kathy Selden	Gianna Pesaniello
Lina Lamont	Devin Bradley
Rod	Kurt Ludwick
Dora Bailey	Jessica Windsor
R. F. Simpson	Matt Bogdan
Rosco Dexter	Steve Culver
Miss Dinsmore	Cory Dolly
Vocal Teacher, Sid Phillips	Thom Harris
Zelda Zanders	Bridget Mazur
Policeman, Sam, Sound Engineer	Sammy Barnes
Assistant Directors ...	Emma Laird, Charlie Szentesi-Thomas, Liz Wilcox
Production Soloist	Treston Melvin
Young Don	Reed Whisner
Young Cosmo	James Mumford
Woman on Screen	Bobbie Calloway
Olga Mara, Ensemble	Grace Ashby
Stripper, Wardrobe Lady, Ensemble	Rachel Lynch
Mrs. Simpson, Ensemble	Becky Mumford
Mary Margaret's Husband, Ensemble	Kel Nagel
Policeman, Ensemble	Andre Scholler
Maid, Hairdresser, Ensemble	Madelyn Shockley
Stagehand, Camera Man, Ensemble	Owen Shockley
J. Cumberland Spendrill III, Stagehand, Ensemble	Will Townsend
Mary Margaret, Ensemble	Lilly Wilcox
Ensemble	Abby Cuesta, Chloe Dasher, Libby Donoway, Elijah Dethloff, Ruby Ludwick, Rebekah McKelvey, Skye Mumford, Kate Oland, Anaixa Rodriguez-Rivera, Sara Wagner

Synopsis

Singin' in the Rain captures the waning days of the silent screen era as it gives way to new-fangled "talkies." With *The Jazz Singer* premiere making Hollywood frantic, the studios are forced to suddenly change all the movie-making rules at once to accommodate sound. In doing so, they leave silent pictures — and some of their stars — behind. When Monumental Studios turns silent *The Dueling Cavalier* into *The Dancing Cavalier*, a musical picture, in order to stay relevant, they are faced with a problem: their star, Lina Lamont, can't sing and can't even really talk. Her voice sounds something like nails on a chalkboard. Enter Kathy Selden, an aspiring actress whose dulcet tones are able to cover Lina Lamont's -- calling into question what it means to act, how credit is distributed, and what it means to get a fair shake in the movie business. *Singin' in the Rain* includes some of the best-loved comedy routines, dance numbers, and love songs ever written, including "Good Mornin'," "Make 'em Laugh," and, of course, the show-stopping dance number, "Singin' in the Rain."

Act I

Scene 1: Exterior of Graumann's Chinese Theater

Scene 2: Interior of Graumann's Chinese Theater

Scene 3: Stage of the Theater

Scene 4: Hollywood Blvd

Scene 5: Simpson's Mansion

Scene 6: Stage of Monumental Pictures Studios

Scene 7: Set of *The Dueling Cavalier*

Scene 8: Monumental Pictures Soundstage

Scene 9: Deserted Soundstage

Scene 10: Miss Dinsmore's office

Scene 10A: Male Vocal Teacher's office

Scene 11: Soundstage, Set of *Dueling Cavalier*

Scene 12: Exterior of the movie theater

Scene 12A: Interior of the movie theater

Scene 12B: Exterior of the movie theater

Scene 13: Don's house

Scene 14: Street outside Kathy's house

15 minute Intermission

Refreshments are available for sale in the lobby.

Act II

Scene 1: Simpson's office

Scene 2: Recording Stage

Scene 3: On the Monumental Studios lot, Lina's dressing room

Scene 4: Simpson's office

Scene 5: Exterior of Graumann's Chinese Theater

Scene 5B: Interior of Graumann's Chinese Theater

Scene 5C: Backstage and Onstage at Graumann's Chinese Theater

Musical Numbers

Overture.....	Orchestra
Fit As A Fiddle	Don, Cosmo
You Stepped Out Of A Dream	Don, Ensemble
All I Do Is Dream Of You	Kathy, Girls
Make 'Em Laugh	Cosmo
Beautiful Girl	Tenor
You Were Meant For Me	Don
Moses Supposes	Don, Cosmo, Ensemble
Good Morning	Kathy, Don, Cosmo
Singin' In The Rain.....	Don
Would You	Kathy, Don, Lina
What's Wrong With Me?.....	Lina
Broadway Melody	Cosmo, Don, Ensemble

Orchestra

Conductor.....	Jeff Baer
Keyboard.....	John Gross
Reeds.....	Joey Coco, Frank Mahoney, Ashley Palmer, Todd Riddleberger
Trumpet.....	Ken Dasher, Pat Shaner, Bill Williams
Trombone	Laura LeBlanc, Paul Tooker
Violin	Courtney Coco
Viola.....	Andy Nyland
Cello.....	Alexzander Baer
Bass.....	Buck Burton
Percussion	Mike Hughes, Jane Mahoney

“Special Thanks” for the help

Also a big thank you to our Patrons and Advertisers for their unwavering support over our eighty-six years.

We also want to thank those individuals who contributed to this production, but we have inadvertently omitted them.

Production Staff (*indicates Chairperson)

Director	Rusty Mumford
Music Director	Jeff Baer
Choreographer	Britni Ilczuk
Assistant Director	Jeremy Mumford
Producer	Becky Mumford
Stage Managers	Sammy Barnes, Jeremy Mumford
Stage Crew	David Allen, Melissa Dasher, Ben Dolly, Jodi Drehmer, Lee Ann Marsh, Taylor Mumford, Jouleycie Rush
Costumes	Devin Bradley, Lynn Bratten, Jean King, Barb Leutner, Becky Mumford*, Ellie Mumford, Skye Mumford, Taylor Mumford, Pam Oland*, Janice Seaman, Angie Wagner
Dressers.....	Sherri Trader-Hynes, Lee Ann Marsh
Props	Jodi Drehmer
Lighting	Ken Johnson
Sound	Joe Benamati, Matt Griffin, Tom Robinson
Special Effects	David Allen
Video Production	Joe Benamati, Tom Robinson
Set Design	Lester Huss, Rusty Mumford
Set Construction	David Allen, Sharon Benchoff, Tony Broadbent, Bobbie Calloway, Lester Huss*, Ken Johnson, Amanda Keaney, Keira Keaney, Jean King, Jim King, Barb Leutner, Kurt Ludwick, Ruby Ludwick, Betsy Metzger, Connor Mumford, James Mumford, Rusty Mumford, Skye Mumford, Debby Nagel, Gianna Pesaniello, André Scholler, Charlie Szentesi-Thomas
Publicity.....	Debby Nagel, Rusty Mumford, Kate Atkins, Shelbie Thompson, Pete Cuesta
Poster/Program Cover	Rusty Mumford
Program Advertising/Layout.....	Tom Robinson
House Manager	Betsy Metzger

Who's Who in the Cast

Grace Ashby (Olga Mara/Ensemble) is thrilled to be a part of her second Players' Production. Grace is currently pursuing her Bachelor of Music degree at Shenandoah Conservatory in Winchester, VA. She has portrayed roles such as Cinderella in Sondheim's *Into the Woods* and recently appeared in the fairy chorus for Shenandoah Conservatory's production of Britten's *A Midsummer Night's Dream*. She hopes you enjoy the show.

Sammy Barnes (Policeman/ Sound Engineer) is having plenty of fun playing various Sams in production. Sammy has appeared as Patrolman Penn in *Wait Until Dark* and as Officer Downs in *Tom Dick & Harry*. Shout out to his top fan...his sister Etty Oooo...

Matt Bogdan (R. F. Simpson) has been involved with the Community Players for over 40 years. Some of his acting roles include Chief Bromden in *One Flew Over the Cuckoo's Nest*, Thenardier in *Les Misérables*, Harry in *Tom, Dick, and Harry*, Jud in *Oklahoma!* Thomas Jefferson in *1776*, George in *Who's Afraid of Virginia Woolf?*, Buffalo Bill in *Annie Get Your Gun*, the Tina Man in *The Wizard of Oz*, Lloyd in *Noises Off*, and Selsdon in *Noises Off*. For the Players he directed *South Pacific*, *Lend Me a Tenor*, *The Music Man*, *My Fair Lady*, *The Odd Couple*, *Twelve Angry Men*, *The Impossible Years*, *Death of a Salesman*, and, most recently, *Leading Ladies*. His storytelling credits include the telling of Edgar Allan Poe's *The Black Cat* and Mark Twain's *The Celebrated Jumping Frog of Calaveras County*. He is currently producing *Old-Time Radio Show* and *Uncle Tom's Cabin*.



Protecting what
matters most.



LANDMARK
INSURANCE & FINANCIAL GROUP

LandmarkInsuranceinc.com

410-651-2110

Who's Who in the Cast (continued)

Devin Bradley (Lina Lamont) is so excited to be part of another Players' production. You may have seen her in past productions like *A Streetcar Named Desire* (Stella), *Leading Ladies* (Audrey), and many others. When not on stage, you can usually find her talking to her cats as though they can understand her. She wishes to say the following: Thank you to the incredible cast and crew for all of your hard work, Thank you to Rusty for giving me the opportunity to bring Lina to life, to Matt, Chloe, Michelle, Paige and Drew for always coming to support me, and, last but not least, to my wonderful fiancé Justin... We're getting married in 4 months!!!

Abby Cuesta (Ensemble) is thrilled to be back home for another wonderful Players' production. She is currently a sophomore at Fordham University. She has been a part of the Community Players for about a decade now, both on and off the stage. She has also appeared in a couple of Possum Point Players' productions. She would like to thank her family and her friends, no matter if they are far away or right down the road, for their never-ending support. She would also like to thank her boyfriend, Kyle, for his love and care. She wouldn't be where she is without him.

Steve Culver (Roscoe Dexter) made his debut with Community Players in 1979 as the Artful Dodger in *Oliver!*. In 2012 he appeared in *Oliver!* again, this time as Fagin. Other Players' shows include *The Wizard of Oz* (Professor Marvel/The Wizard), *The Foreigner* (Charlie Baker), *Beauty and the Beast* (Cogsworth), *Arsenic and Old Lace* (Teddy Brewster), and *The Drowsy Chaperone* (Man in Chair). Steve was most recently seen as Doc Myers in *Leading Ladies*.

We Love Finding
Discounts that
Save you Money



Best Insurance Agent
on the Eastern Shore
David Galeone



GARY MARSHALL
INSURANCE AGENCY

PROUDLY SERVING THE SHORE SINCE 1995
HOME • AUTO • LIFE & MORE!

12610 Somerset Ave.
Princess Anne, Md.
410-651-1111

1138 Parsons Rd.
Salisbury, Md.
410-749-2220

www.GaryMarshallAgency.com



Join our Facebook
group of more than
15,000 members

Who's Who in the Cast (continued)

Chloe Dasher (Ensemble) is a recent graduate of Parkside High School and is thrilled to be performing in this iconic musical. She is an 8-year dancer and a 10-year theater nerd, having been involved in 19 productions so far. Her most recent role was as Plankton in *SpongeBob the Musical*.

Coreen Dolly (Miss Dinsmore) is appearing in her third Players' production and first musical with Community Players. She was previously in *A Streetcar Named Desire* and *Winnie the Pooh*. She is very excited to be working with some former cast members and meeting new people. When not performing, Coreen enjoys karaoke and spending time with her family, and she would like to thank John and Ben for their patience and support.

Libby Donoway (Ensemble) is excited to debut in her first musical with Community Players. She has been performing since age 7 and has been in shows including *Cinderella*, *Wizard of Oz*, *Joseph and the Technicolor Dream Coat*, *Newsies*, *The Addams Family*, and *Footloose*. When she's not acting, she enjoys sports, outdoor activities, and photography. She would like to thank her family and friends for all their love and support.

Thom Harris (Diction Teacher, Sid Phillips) would like to thank Rusty for casting him in his second show with Players, his first being *Senior Follies*. Thom has also performed (*Mr. Green-CLUE*, *Clarence-Wonderful Life*, *Pirelli-Sweeny Todd*) and directed (*Murder is Announced*, *Wonderful Life*) for SSP. He has choreographed shows in Delaware, DC, Virginia, and Maryland. Thom has also been a performer with Ovation Dinner Theatre (DE, MD). Thom's best role has been as Brian's (now deceased) partner for 29 years.

Kyle Hayes (Cosmo Brown) is honored and proud to present his biggest role yet with Community Players. This is his fourth musical with Players, and he is grateful for all that they've done to help him. He would also like to thank his patient and kindhearted girlfriend, Abby, for all her support. He wouldn't be here without her.



Who's Who in the Cast (continued)

Emma Laird (Assistant Director/Ensemble) is an eighteen-year-old freshman at Salisbury University. This is her sixth theatrical production and her first show with Players, with notable previous shows being *The Lion King* and *Pippin*. She will be performing in the annual televised PBS *Capitol 4th Celebration* next month. Emma is very excited and honored to be performing with the Community Players.

Kurt Ludwick (Rod) is thrilled to return to the Players' stage after a brief eighteen-year hiatus. He appeared in several shows in the early 2000s, including *Lie, Cheat, and Genuflect*, *My Three Angels*, and *You Can't Take It with You*. He teaches mathematics at Salisbury University and plays trombone in the Salisbury Symphony Orchestra (usually not at the same time). He would like to thank his family for their love, support, and insistence that he get out of the house more often.

Ruby Ludwick (Ensemble) is delighted to be in this Community Players' production of *Singin' in the Rain*. She appeared in *Jesus Christ Superstar* last summer, making this her second show with Players. Her prior stage experience also includes *Disney's Aladdin Jr.*, *All-Shore Chorus*, and *A Little Princess*. Ruby loves singing, dancing, acting, writing, and playing drums. She would be on stage every day if she could. Ruby would like to thank her friends and family for cheering her on and Community Players for giving her the opportunity to perform.

EXPERIENCED PROVIDERS OF MENTAL HEALTH SERVICES
FOR CHILDREN, ADOLESCENTS, ADULTS, AND FAMILIES



540 Riverside Drive, Suite 16, Salisbury, MD 21801
410-543-8291
atlanticpsychological.com

Who's Who in the Cast (continued)

Rachel Lynch (Ensemble) is 26 years old and is from Snow Hill. This is her first performance with Community Players. She has been acting for the past 12 years and dancing for the past 23 years. She is honored to be a part of this cast. She is proud to be performing in this show in honor of her late father who first introduced her to this musical.

Bridget Mazur (Zelda Zanders) is returning to the stage in her first production with Players. Bridget started acting at 10 years old with the Dorchester Recreation and Parks Drama Camp. She continued acting in productions including *RENT*, *Urinetown the Musical*, and *Freaks on Broadway* at Salisbury University where she earned her theatre degree. Most recent theatre credits include *Sweeney Todd*, *Scrooge* (ACT), and *Let the Right One In* (Groove Theatre), as well as multiple musical revues with the CAST in Cambridge. Bridget can't wait to continue to work with Players in future shows.

Rebekah McKelvey (Ensemble) is excited to be performing in her third show with Community Players. She has also appeared in *All Together Now!* and *Little Women*. She is a student at Wor-Wic Community College and plans to continue her education at Salisbury University. Rebekah is the pianist at Immanuel Baptist Church. She enjoys literature, playing the piano, listening to music, and spending time with her family, including her fifteen nieces and nephews.



Mason Little

mason@cfsfinancial.com

Christopher Wilde

chris@cfsfinancial.com

**YOU KNOW WHERE YOU'RE GOING, BUT DO
YOU KNOW HOW YOU'RE GETTING THERE?**

**Speak to an Investment
Advisor Representative today!**

953 MOUNT HERMON ROAD SALISBURY, MD 21804
PH: (410) 546-0911 | TF: (800) 465-7042 | F: (410) 543-2759
WWW.CFSFINANCIAL.COM | INFO@CFSFINANCIAL.COM

SECURITIES AND INVESTMENT SERVICES ARE OFFERED THROUGH CFS FINANCIAL SOLUTIONS, A MEMBER OF THE CFS FINANCIAL GROUP. CFS FINANCIAL GROUP IS A FINANCIAL SERVICES COMPANY. CFS FINANCIAL GROUP IS NOT A FINANCIAL INSTITUTION. CFS FINANCIAL GROUP IS NOT A FINANCIAL INSTITUTION. CFS FINANCIAL GROUP IS NOT A FINANCIAL INSTITUTION.

Who's Who in the Cast (continued)

Treston Melvin (Production Tenor/Ensemble) is 17 years old and attends Pocomoke High School. They have a love and passion for the spotlight. Treston is a poet, vocalist, and social activist, having been involved in performing arts since middle school. Treston studied the arts in Pocomoke schools and other theatre companies of the area. Being a member of *Singin' in the Rain's* cast has expanded their range and multiplied their love for the stage; Treston Melvin is excited to take the stage in this amazing production.

Becky Mumford (Mrs. Simpson) is happy to return to the Players' stage after several years hiatus. She stays busy being a full-time Mimi. The one thing she has enjoyed most with this show is being with her family. It brings back sweet memories of when her sons were young, and the family did shows together. "I know our older son is looking down on us and smiling." Thank you for your love and support.

James Mumford (Young Cosmo/Ensemble) is excited to be in his first Players' production. He is a rising 8th grade student at Wicomico Middle School. He wants to thank his family for their support on his new adventure.

Skye Mumford (Ensemble) is happy to be in her first Players' production. She attends Wicomico Middle School as a rising 7th grader. Skye enjoys being involved in the Concert Choir and band at school. She wants to thank her family for their love and support during this exciting time.

APPLE DISCOUNT DRUGS

proudly supports the

COMMUNITY PLAYERS

of Salisbury



Apple MedSync: *Synchronized Rx Refills*
Apple Pax: *Medication Packaging Service*
Apple Infusion: *Enteral and IV Therapies*
Core Clinical Care: *Accredited Diabetes Center*

Custom Compounding Lab
Home Medical Equipment
Oxygen • Nebulizers • CPAP
CBD Products

FREE, Local Prescription Delivery
Vaccinations • COVID-19 Testing

Fruitland • 410-749-8401 • Route 13 South & Cedar Lane
Salisbury • 410-543-8401 • 1210 Nanticoke Rd., Pecan Square

Who's Who in the Cast (continued)

Kel Nagel (Ensemble) has appeared in over twenty Players' shows and directed seven. Currently Players' president, he also chairs our performance space committee. He plans to direct *Kiss Me Kate* next June.

Kate Oland (Ensemble) is a 15-year-old rising Junior at The Salisbury School. She is thrilled to be part of her first production with Players. She has been in *Footloose*, *The Addams Family* and *The Wizard of Oz* at school. In her free time she is a competitive dancer.

Gianna Pesaniello (Kathy Selden) is 22 and hails from Snow Hill. She has been performing since she was 8. She graduated from Salisbury University in 2020 and has since been performing with the Young Americans across the country. Some of her past credits include Penny in *Hairspray!*, Audrey in *Little Shop of Horrors*, and Ariel in *The Little Mermaid*. She would like to thank the cast and crew for such a great experience in her first show with Community Players of Salisbury.

Anaixa Rodriguez-Rivera (Ensemble) is an extroverted and talented actress, singer, and dancer who loves to participate in shows. She has been in *Fiddler on the Roof* (Salisbury Christian School), *Prodigal* and *I Will Follow You* (Power Productions Ministries), *Frozen* and *The Lion King* (Children's Theatre). She has also performed with the Salisbury Dance Academy, the Eastern Shore Ballet Theatre, and the Salisbury Dance Academy Company. She is very excited to be an ensemble member in *Singin' in The Rain*.



Finley Appraisals, P.A.

**Providing residential appraisals
for local home owners and
mortgage lenders since 1988.**

Gary & Robin Finley

410-546-0094

finleyappraisals@comcast.net

Who's Who in the Cast (continued)

Luke Schoellkopf (Don Lockwood) is thrilled to be joining Community Players for another show. Luke previously performed in shows such as *Matilda* (Michael), *Little Women* (Professor Bhaer), and more. Luke also performed with Possum Point Players, Theater Academy of Delmarva, Ocean Pines Children's theater, as well at his high school, The Salisbury School. He will be attending Marymount Manhattan College next fall to pursue a BFA in Musical Theatre. He would like to thank the incredible cast and crew of *Singin' in the Rain* for all their hard work and dedication.

Andre Scholler (Policeman/Ensemble) has performing experience from eight years working at Disney. He has a master's degree in literacy and is currently a high school algebra teacher.

Madelyn Shockley (Maid/Ensemble) is appearing in her second production with Players. Her favorite role was Mary Anne in *Gilligan's Island the Musical* with LSPAC. When she isn't on stage dancing and singing, she enjoys volunteering at the Humane Society. She'd like to thank her brother for always being her theater companion and the cast and crew for all the hard work and time they put in. She is so happy to be a part of this production and so thankful for all the people she's connected with and all things she's been able to learn through it.



1405 Wesley Drive
Salisbury, Maryland 21801
410-749-1919
www.trscpa.com

THE TRS CPA GROUP ADVANTAGE

We believe in building relationships. We have served families, businesses, and investors for forty years and enjoy taking an active role in our community. The experts at TRS CPA Group strive to deliver value by providing sound advice and guidance to individual clients and businesses. By understanding the complexities of tax law we are able to save our clients money, preserving their assets, and creating an overall tax strategy.

Who's Who in the Cast (continued)

Owen Shockley (Ensemble) is very excited to perform his second show with Community Players. Owen was previously in the ensemble of Community Players' *Little Women* and most recently was Gilligan in LSPAC's production of *Gilligan's Island The Musical*. He would like to thank the entire cast and crew for their commitment to putting on a great show.

Charlie Szentesi-Thomas (Assistant Director/Ensemble) is delighted to be involved with another Community Players' production. Charlie has been acting since 2006 and became involved with Players in 2012. Favorite roles include *A Laura Ingalls Wilder Christmas* (Carrie Ingalls), *Oliver!* (Fagin's Gang), *Blithe Spirit* (Edith), *Fiddler on the Roof* (Fruma-Sarah), and *Chitty Chitty Bang Bang* (Childcatcher). This season, Charlie was involved with *Leading Ladies* (Dresser/Stage Crew) and *Crimes of the Heart* (Assistant Stage Manager).

Will Townsend (J. Cumberland Spendrill III/Ensemble) is excited to return for another wonderful Players' production with another talented cast and crew. Recently, he portrayed Barnette Lloyd in *Crimes of the Heart*, and has participated in many others. His favorites include *Cuckoo's Nest* (Billy), *Putnam County Spelling Bee* (Barfée), and *Jesus Christ Superstar* (Judas).



Proud to Support
COMMUNITY PLAYERS
of Salisbury
AVERY HALL
INSURANCE SOLUTIONS FOR TODAY'S WORLD 

Benefits | Commercial | Personal

AveryHall.com      

Salisbury 410.742.5111	Easton 410.822.7300	Seaford 302.536.9470	Milton 302.684.3413
---------------------------	------------------------	-------------------------	------------------------

Who's Who in the Cast (continued)

Sara Wagner (Ensemble) is thrilled to be performing in her third show with Community Players. She was part of the ensemble for *Jesus Christ Superstar* and *Little Women*. Sarah has also been Margie in BMS's production of *The Enchanted Bookshop* and was the Magic Carpet in *Aladdin* with Theater Academy of Delmarva. She enjoys singing, dancing, drama, flute, and gymnastics. Sarah wishes to thank her parents and sister for all their love and support.

Reed Whisner (Young Don/Ensemble) is so excited to be in his first show at Community Players. He has previously performed in *The Addams Family* and *Footloose* at The Salisbury School. It's been a great experience working with the rest of this amazing cast, and he's very thankful for the opportunity to be a part of *Singin' in the Rain*!

Lilly Wilcox (Mary Margaret/Ensemble) is a 17-year-old musical lover. She enjoys dancing, playing piano, and singing. She has been in various musicals, such as *Mary Poppins*, *Matilda*, *Little Women*, and many more. Lilly would like to thank the cast and crew for working together to put on a fantastic show.

Liz Wilcox (Assistant Director/Ensemble) is thrilled to be performing with Community Players once again. Liz's history with Players includes *Mary Poppins*, *Beauty and the Beast*, *Into the Woods*, and *Little Women*. Liz would like to thank Nana and Papa Kellam for introducing her to many classic movie musicals, including *Singin' in the Rain*.

Jessica Windsor (Dora Bailey) is thrilled to be back in her 6th Players' production. You may have seen her most recently as the Troll in Players' *Little Women*. Outside of Players, Jess plays the role of music teacher to some of the tiniest humans in Dorchester County and godmom to three wonderful godchildren.



Quality & Service Are What We Deliver

410.546.1215 * www.catooil.com *



Who's Who Behind the Scenes

Rusty Mumford (Director/Set Design) has been a member of Community Players for over 35 years, having held every office in the organization (except treasurer) and having taken part in almost every show, on stage or backstage. He has directed numerous productions for Players, most recently *A Streetcar Named Desire*. On stage, Rusty has appeared in many productions, including his favorites *Jekyll & Hyde* (Lord Reginald Kensington), *Rumors* (Ken), *Harvey* (Elwood P. Dowd), *Social Security* (David Kahn), *Godspell* (Ensemble) and *Christmas Carol* (Scrooge/Dickens). Love to his family, especially Becky (and the other two P's), and Joanne! Break a leg to JJ and Skye who are making their stage debuts in this production! Thanks for believing in me!

Jeremy Mumford (Assistant Director/Stage Manager) has been with the Players his whole life. He has appeared in numerous shows as a child. Later, in his teen years, he found his love for backstage. He has done everything from stage-hand, flight crew, sound, lighting, and recently has been stage manager. He made a cameo appearance on stage in dim light as the killer in *Mouse Trap*, (sorry Judy, but Dad made me do it). Jeremy could not do anything he does without the constant love and support of his wife (Taylor), Mom, Dad, his handsome son Connor, his beautiful daughter Ellie, and his nieces and nephews. He loves you guys to no end.

Becky Mumford (Producer/Costumes Co-Chair) is happy to return to the Players' stage after several years hiatus. She stays busy being a full-time Mimi. The one thing she has enjoyed most with this show is being with her family. It brings back sweet memories of when her sons were young, and the family did shows together. "I know our older son is looking down on us and smiling." Thank you for your love and support.

Jeffrey Baer (Musical Director) has been the Musical Director for many shows with Community Players including *Oliver*, *Matilda*, *They're Playing Our Song*, *Addams Family*, *Into the Woods*, *Fiddler on the Roof*, and *Dirty Rotten Scoundrels*. He is also proud of his on-stage roles in *Jekyll and Hyde*, *Godspell*, *On Golden Pond*, and *Beauty and the Beast*. He and his wife love to travel to Disney World and spend time with their four wonderful children.

Britni Ilczuk (Choreographer) is, by day, a teacher at Salisbury Dance Academy and a homeschool mom of three, and she serves on the worship team at Delmar Christian Center. By night, Britni has been involved in Community Players for 16 years, with roles both on stage and behind the scenes working with props and choreography. In her spare time, Britni enjoys embroidery, nail art, resin projects, puzzles, and coloring. She has found so much joy working with this cast and is unbelievably proud of what each one has accomplished during this show. She would like to thank her family for their constant support and her friends for always believing in her. To God be the Glory!

Who's Who Behind the Scenes (Cont.)

Sammy Barnes (Stage Manager) is having plenty of fun playing various Sams in production. Sammy has appeared as Patrolman Penn in *Wait Until Dark* and as Officer Downs in *Tom Dick & Harry*. Shout out to his top fan...his sister Etty Oooo...

Lester Huss (Set Design/Construction) would like to wish the cast and crew all the best and to thank all who have supported the efforts this time around.

Ken Johnson (Lights) is currently teaching Drama for Wicomico County. He is celebrating his 35th year teaching. He began his "career" with Community Players over 40 years ago, running a follow spot for *Don't Drink the Water*. Ken has directed several productions for Players, most recently *Noises Off*. He has appeared on stage often, most recently as Mrs. Trunchbull in *Matilda*. He'd like to thank Yoshi and his friends in Players for allowing him to continue this "hobby".

Pam Oland (Costume Co-Chair) is helping with the costumes for her first show at Players. She has helped costume three shows at the Salisbury School. In addition, she helps alter costumes for her daughter's dance studio.

David Allen (Special Effects) has been a member of Community Players since the fall of 1993, helping with lighting in *Oklahoma!*. Over the years he has been involved as board member, vice president, president, stage manager, as well as helping with set building, lighting, sound, special effects, ticket sales, and the man in a boat during the tornado in *The Wizard of Oz* (CPS). David also has devoted time to local community arts productions and events with the Magi Fund, Salisbury Wicomico Arts Council, Eastern Shore Ballet Theatre, local schools and various other community groups over the years.

Tom Robinson (Sound Design) has been part of Players' sound team for 31 shows and serves as Players' Vice President. He has also been the Technical Director of all 19 musicals at The Salisbury School. He is the Director of Technical Ministries at Christ UM Church.

Joe Benamati (Sound) has appeared on stage with Players in *Oliver!* (Mr. Bumble) twice, *The Wizard of Oz* (Cowardly Lion), and *Anything Goes* (Moonface Martin). He directed *A Christmas Carol* and *Mary Poppins*. He has also been a stage manager, lighting designer, flight coordinator, and sound director for previous Players' shows. He is member of the Tech Team at Christ UM Church.

Matt Griffin (Sound) appeared on stage with Players in *The Man Who Came To Dinner*. He is member of the Tech Team and chairman of the Drama Team at Christ UM Church.

Our Patrons 2022-2023

Legacy Club

Peter & Kimberly Cuesta

Tom & Susan Robinson

Benefactor

Jim & Jean King

Rick & Gina Gunter

Ernie & Elizabeth Matthews

Betty Wootten

Guardian

Jerry Gietka

Kel & Debby Nagel

Phyllis & Katie Oldham

Beverly & Walter Plachta

Sponsor

Lynne Pollitt Bratten & Jenny Tusing

Rod & Pat Layton

Bill & Faye Morin

Salisbury Elks

Anonymous

Donor

Stanley & Diana Baker

Donna Blackwell

Andy & Marilyn Booth

Jeri & Jonathan Bounds

Robin & Joseph Burns

Bobbie Calloway

Dr. Stephen L Capelli & Bonnie Walston

Donnie & Debra Cooper

Gary & Tracy Desjardins

Veronique & Memo Dirker

Bill & Jennifer Doyle

Barbara Hanson - Dance Unlimited

Stephen & Holly Hearne

Fred & Shirley Herrmann

Jacqueline Jones & Fran Robino

John & Frances B. Juriga

Lewis & Adrienne Kadushin

Karen & Chuck Lutz

Ken & Elizabeth MacFarlane

Dick & Margy Meeks

James Morris & Myrna Lehner

Mike & Valerie Murphy

Alan Musser

Pat & David Oberholtzer

Frankie & Frank Shipper

Charles & Sharon Sorrentino

Barbara Stephens

Shirley Taylor

Richard & Karyl Tyler

Tom & Lydia Welsh

Friend

Fred & Nancy Althaus

Jeffery & Patricia Baer

Barbara Benton

Natalie & Dale Cook

Vanessa Laughman

Jack Levering

Walter McCabe

Patti Mannion

Cathy Moore

Steve Tasco & Orville Nichols

Janet & Bill Owens

Ben Reavis

Sallie Ridgway

Stephanie Taylor

Frank & Linda Tobat

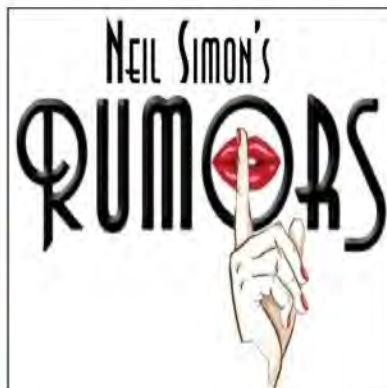
Arlene White

Stephanie Willey

Community Players Next Season



November 2023



February 2024



April 2024



June 2024

For more information call
410-546-0099 or on the web
www.SBYplayers.com

Upcoming Community Players Fundraisers

For more information - 443-235-3272



Old-Time Radio Show

Performing Old-Time Radio Shows
and Commercials

Saturday, June 24 - 7 PM

Community Players
5109 Nutters Cross Rd -Salisbury, MD 21804

\$10 (cash or check)

Jammin' in July at Kylan Barn

11 Live Musical Groups

Saturday, July 29 Noon - 8 PM

Kylan Barn
30603 Dusty Lane
Delmar, MD 21875

\$10 (cash or check)



TRIVIA NIGHT

Trivia Night

June 23, July 28, August 25 - 7 PM

Community Players
5109 Nutters Cross Rd - Salisbury, MD 21804

\$5 (cash or check).

Uncle Tom's Cabin

Auditions June 25 & 26



September
at various venues.

\$10 (cash or check)

Edgar Allan Poe: His Tales of Horror

October
at various venues.

\$10 (cash or check)





Find our office at the corner of Snow Hill Road
and Beaglin Park Drive in Salisbury

***Dr. Rick Dawson and Staff would
like to say “Congratulations”
to all their patients and
Community Players***



**RickDawsonDDS.com | 410.546.7770
835 SNOW HILL RD. SALISBURY, MD 21804**

Farmers Bank of Willards Presents



Connecting you
to your money

www.FBWbank.com



Congratulations to
the cast and crew of
Singin' in the Rain



Peter Cuesta, DPM

**Conservative, gentle management
of the foot and ankle**

**11021 Nicholas Lane
Ocean Pines, MD**

410-208-4878 www.darnfeet.com



COMMERCIAL & RESIDENTIAL

410 • 749 • 0180

jacobsyardworks@comcast.net

- Professional Grounds Maintenance
- Landscape Design & Installation
- Turf Management
- Irrigation
- Hardscaping
- Landscape Lighting

JACOB PARSONS • LUCAS PARSONS

OWNER • OPERATORS

Jacob's Yardworks, LLC



Been SWAC'd?

JOIN THE



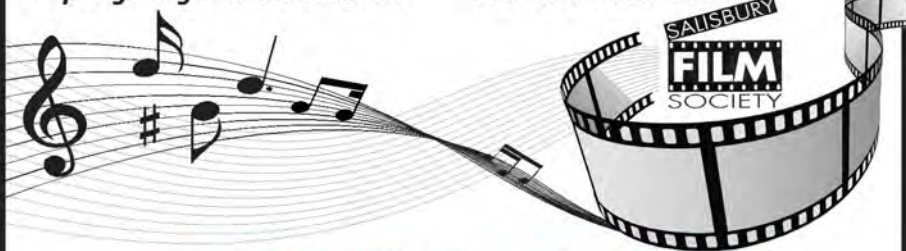
Salisbury Wicomico Arts Council

TO CREATE "ARTS FOR BETTER LIVING!"

"We can do together, what we only dream about...alone."

Arts Advocacy | Arts Partnerships

- Community Arts Grants
- Arts Foundation Scholarships
- School Arts Grants
- Thanksgiving For The Arts Superstar Gala
- River City Arts Jam Festival
- Let's do Lunch Arts Luncheon
- Artists in Residency
- Accent on the Arts Magazine
- Instrument Barn
- Spring Fling Arts & Craft Show
- Classics for a Cause youth event
- SWAC PAC 14 Show
- 3rd Fridays
- SWAC'y Happy Hour
- Salisbury Film Society
- Theme Home Arts Parties
- Regional, State, National Arts Advocacy
- Numerous collaborative efforts
- Wicomico ArtScape Program
- Art Exhibits & Shows



Salisbury Wicomico Arts Council

110 West Church Street • Salisbury MD 21801

Ph: 410-543-2787 • Email: arts4shore@gmail.com

www.getswac.org

Boone's Tunes of Delmarva

Salisbury, Berlin, & Delmar



MUSIC CLASSES:
BABY & TODDLER
PRE-PIANO
GROUP PIANO
PIANO LESSONS
VOICE LESSONS



Susan Boone Upton, Director 🎵 Degreed, Licensed, Certified
Nurturing the love of music for all ages, infant through adult



Musikgarten Exemplary Award
Multiple State Vocal Winners
National Piano Guild
Royal Conservatory Assessments
National Music Theory
Honor Roll



www.boonestunesofdelmarva.com

443-235-9839



Peninsula Eye Center

Peninsula Cataract & Laser Center

David J. Ospital MD • Raymond J. Clifford MD • Brandon M. Metcalf MD, MPH
Kevin W Darcey OD • Li Qing Ng OD

101 Milford St.
Salisbury, MD 21804
(410) 749-9290

314 Franklin Ave.
Berlin, MD 21811
(410) 641-3955

500 Market St.
Pocomoke, MD 21811
(410) 957-1355

1320 Middleford Rd.
Seaford, DE 19973
(302) 629-3044

BURNETT-WHITE ***TIRE PROS***

 **Budget**® Truck Rental



MICHELIN

BURNETT WHITE ***TIRE PROS***

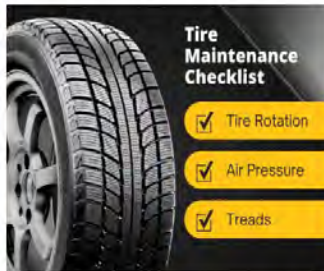
Continental



Our philosophy is simple:
we never promise more
than we can deliver,
and we always give
the customer
more than they expect.

If you are in the area,
stop by and see the
latest we have to offer in
tires and tire technology.

With names like
Bridgestone and
BFGoodrich® in stock
we know you'll find
what you need.



412 E Main Street Salisbury, MD 21804
410-742-2222 www.burnettwhite.com

Proud supporter of Community Players



Enjoy the Show!

Hebron Savings Bank

puts the spotlight on our community!

We are proud to be your Hometown Community Bank for over 105 years! Visit us today at one of our 13 full service locations, or save time by using our convenient Online and Mobile Banking!



Find out more at

www.HebronSavingsBank.com





**Have you considered the
benefits of a private
education for your child?**

The Salisbury School cultivates
independent thinkers,
leaders, artists, athletes,
volunteers and entrepreneurs.
Visit us to see our students'
passion for hands-on,
step up and interactive
education.

To learn more, call today to arrange a
personal tour.

410 742 4464 X123

www.thesalisburyschool.org

info@thesalisburyschool.org

Joel R. Smith

Piano Tuning & Service

410-543-1200

www.joelrsmith.com

joelsmithmusic@comcast.net



making music possible
since 1983



*We are happy to support
Community Players of Salisbury*

Cockey, Brennan & Maloney, P.C.



Cockey, Brennan & Maloney, P.C. is comprised of nine attorneys who handle a remarkably diverse caseload, including civil rights, constitutional, employment, domestic, corporate, real estate, land use, personal injury and municipal matters. We pride ourselves on strong litigation skills, handling cases in all Maryland state and Federal courts, at both the trial and appellate levels, and covering an array of civil, criminal and administrative matters. We go to bat for our clients and client satisfaction is our goal in every case.

313 Lemmon Hill Lane, Salisbury, MD 21801
410-546-1750

CELEBRATING 70 YEARS

ACME CERAMIC TILE COMPANY

Family Owned & Operated Since 1953

DESIGNER SHOWROOM

- BACKSPLASHES-**
- BATHROOMS-**
- FLOORS-**
- REMODELS-**

**Proudly Serving Delmarva with Two
Locations - Salisbury and Cambridge!**

**Porcelain, Ceramic, Glass, River Rock,
Marble, Mosaics, Stocked Schluter
Systems and More!**

**Experienced and knowledgeable staff
to help your dream project a reality!**

410-221-7575 -CAMBRIDGE

410-341-4300-SALISBURY

www.acmeceramictileco.org

acmeceramictileco@gmail.com



Partnering WITH **DELMARVA.**



The Bank of Delmarva
proudly supports
community theater
and the arts.



The Bank Of
Delmarva

www.bankofdelmarva.com





**The Eastern Shores most
trusted Jeweler since 1853**

**Proud supporter of
Community Players**



Thanks *again* for voting us
THE
BEST
for 27 years in a row!



Being the fourth oldest continuously operated Jewelry store, Kuhn's Jewelers is here for you, and every generation. We hand select our diamonds and jewelry so you can find the perfect piece. Select from our high quality engagement rings, bracelets, necklaces, watches, and more!

1306 S. Salisbury Blvd Suite 192 Salisbury, MD 21801

410-742-3256

Tuesday - Friday 10 AM - 5:30 PM Saturday 10 AM - 4 PM

Where
EVERYONE
is Welcome



Helping people relate to God in a life-changing way!

410-742-5334

www.christsby.com

211 Phillip Morris Drive Salisbury, MD 21804

Services - Saturday - 6 PM & Sunday - 10:00 AM

GILLIS GILKERSON

WWW.GGIBUILDS.COM



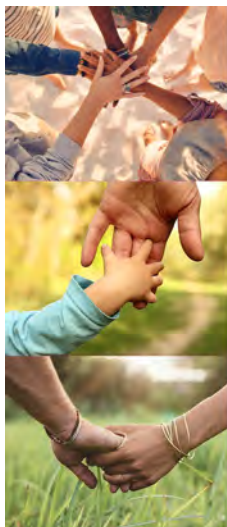
PKS

**Certified Public Accountants & Advisors to Business
Investment Advisors & Financial Planners**

Proud Supporter of the Community Players of Salisbury

pkscpa.com
pksadvisors.com

Lewes • Salisbury • Ocean City



**Community
Foundation**
OF THE EASTERN SHORE



Celebrating

\$100 MILLION

in grants & scholarships
to the local community
since 1984

It all starts with a conversation
CFES.org • 410-742-9911



H.V.A.C.



Services Unlimited

Heating & Air Conditioning

818 Brown Street Salisbury, MD 21804

Frank Tobat, President

410-546-1557

www.hvacservicesunlimited.com



WOODY'S
PEST CONTROL

410.546.1544

www.WoodysPest.com

Salisbury Elks Lodge #817



Elks Care...Elks Share

Serving the local community since 1903

***Good Luck to the Community Players
Cast and Crew!***



KIDtoKID®

CASH

FOR KIDS' STUFF

2632 N SALISBURY BLVD 3 IN SALISBURY
443.736.7036 @KIDTOKIDSALISBURY



UPTOWNCHEAPSKATE®

EARN CASH
FOR CLOTHES

2632 N SALISBURY BLVD 5 IN SALISBURY
410.845.2751 @UPTOWNSALISBURY



Tapman's

REFRIGERATION

Serving the Eastern Shore since 1985

2231 Northwood Drive, Salisbury, MD 21801

410-742-9570

Keepsake Art & Framing

Reawaken your walls and breathe new life into your home and business with the beauty of quality custom framing.

Visit The Framing Redhead and The Frame Father at 327A Civic Avenue in the Twilley Centre in Salisbury
410-749-6663

(Mirrors, shadowboxes, printing, mats, glass, repairs, unframed art, ready-made frames and more)



FIRST SHORE FEDERAL

www.firstshorefederal.com

410-546-1101

106 S Division St
Salisbury MD

Community
Minded.
Just like you

Branch Locations

Berlin Ocean Pines Pocomoke City Salisbury
Millsboro and Ocean View DE



Williams TOWING

SERVING DELMARVA SINCE 1947

410.742.4570 443.880.0150

Goin' Nuts Cafe

Full Menu plus Specials starting at 11 AM

Happy Hour plus

Late Night Lounge Specials

Also available for large parties!

947 Mount Hermon Road - Salisbury

410-860-1164

DANCE



unlimited

Preschool thru Adult

Ballet • Tap • Jazz

Barbara S. Hanson, Owner

108 S. Saratoga Street
Salisbury, MD 21804

410-543-2012

www.DanceUnlimitedSby.net

**Please turn all cell phones off or to vibrate.
The use of devices with lighted screens,
including texting, is prohibited.
Video or audio recording of this
production is strictly prohibited.**



GATEWAY

ELECTRIC, LLC

410.341.3650

Tim Krauss

WE HAVE THE MEATS™



Three Salisbury Locations

116 Ward Street

2350 N. Salisbury Blvd.

31942 Summer Drive
(Next to Wor-Wic)

Breakfast · Lunch · Dinner



GREASE MONKEY

Oil Changes & More

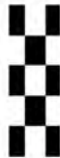
658 S. Salisbury Blvd.

Across from
WAWA on Hwy. 13

Local Business supports
Local Arts!

**No Appointment
Necessary!**

Greasemonkeysalisbury138.com



Let Us Service Your
Vehicle

#443.944.8818



Minuteman Press®

WE DESIGN, PRINT & PROMOTE...YOU!

100 Lloyd Street • Salisbury, MD 21804

410.548.7122 • image@minutemanpress.com

salisbury.minutemanpress.com



Call me for all your ... LIFE, HEALTH, AUTO
and HOMEOWNERS insurance needs!

Gamee Elliott

923 Eastern Shore Drive Salisbury, MD 21804
410-749-4725 www.gameeelliott.com

**"Quality Detailed Cleaning
From Edge to Edge!"**

Clean
edge LLC

- Commercial / Industrial / Residential
- Move-In/Out Specialist
- Floor Scrubbing/Stripping/Waxing
- Post/Final Construction
- Rental Cleaning
- Porter/Building Maintenance Service
- Condo Cleaning
- Office Cleaning
- Office Furniture Steam Cleaning
- Pet Odor Treatments
- Window Cleaning
- Free Estimates



410-548-7118
www.cleandedgeclean.com



KNOW

**the arts are the
highest form of
expression.**

pnc.com



PNC BANK
for the achiever in you®

Robertson & Robertson P.A.

WWW.ACCIDENTLAWYERSMD.COM

J. SCOTT ROBERTSON • LAURA E. ROBERTSON • AMY L. TAYLOR
ACCIDENT, INJURY, AND INSURANCE CLAIMS LAW

410-749-9111

Edward Jones®

Member SIPC



Jessica A. Eisemann, CFP®, AAMS™, CRPC™

Financial Advisor

106 Milford Street Suite 701
Salisbury, MD 21804
410-742-3264

**Enjoy the
performance.**

▶ edwardjones.com



**SERVING
DELMARVA
SINCE 1959**

www.charlesbrownglass.com

410-749-3316

Fancy Fingers Nail & Massage Salon



Randa Collins, Owner

925B Mt. Hermon Road Salisbury, MD 21804

410-543-0798

rlcollins0798@aol.com



HOLLOWAY & MARVEL, P.A.
CERTIFIED PUBLIC ACCOUNTANTS

105 Milford Street
P.O. Box 2916
Salisbury, Maryland 21804

Office: 410-546-5567

Fax: 410-548-3276

E-Mail: cpa@hmcpafirm.com